

Introduction

Native Americans have lived in this region for over seven thousand years. The indigenous peoples to this area are the Mohican Nation who numbered about 20,000 people, and flourished in the Hudson River valley and Housatonic River valley. They used the upland woodlands including Monterey for their hunting grounds. The Native American displays at the Bidwell House Museum generally illustrate the pre-contact period prior to the 1600s. In the carriage barn, you will find a brief history of the Mohicans – the Muh-he-con-neok – “the People of the Waters That Are Never Still” – who became known as the Stockbridge-Munsee after living in Stockbridge in the 1700s. The self-guided walk takes you back in time with displays about medicinal herbs, farming practices and a wigwam hunting village. Although the Stockbridge Indians were forced to relocate westward in the 1780s, this area remains their sacred homeland and the tribe maintains a strong connection here.



School Children explore the wigwam on the Museum grounds.



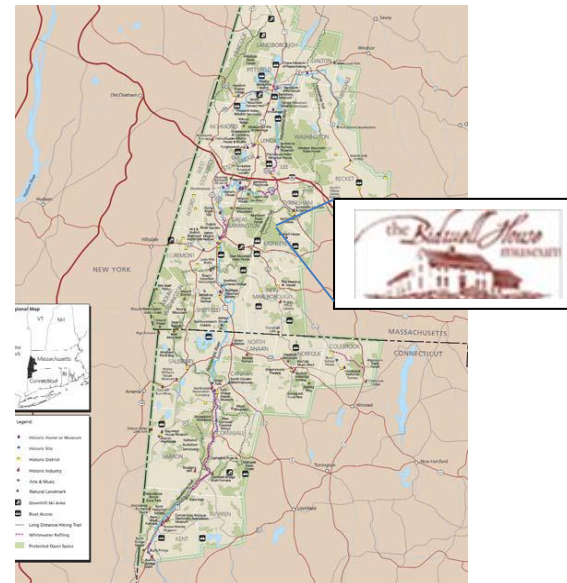
The heritage garden in the summer

The house is open for tours Thursday through Monday from May to October. Grounds are open to the public for free year round. For hours and list of programs and events, please visit www.bidwellhousemuseum.org
100 Art School Road, Monterey MA 01245
(413) 528-6888 or bidwellhouse@gmail.com

The Bidwell House Museum is a private 501(c)(3) non-profit educational institution. The house is listed on the National Register of Historic Places. The house, grounds, gardens, woodlands and 192 acre property provide visitors with an immersive encounter with Early American History, including Native Americans.

The Native American Woodland and Hunting Grounds Interpretive Trail at the Bidwell House Museum was developed in collaboration with the Upper Housatonic Valley Heritage Area and with the input and consent of the Stockbridge-Munsee Band of the Mohican Nation. This is part of a regional Native American Interpretive Trail focusing on the Mohican Nation in Western Massachusetts and Northwest Connecticut. This trail tells one part of the Mohican story. You can find other parts of the story at the Mission House in Stockbridge, Monument Mountain in Great Barrington, and other locations.

For links to other sites, visit the websites of Housatonic Heritage: housatonicheritage.org; and the Stockbridge-Munsee band: www.mohican.com.

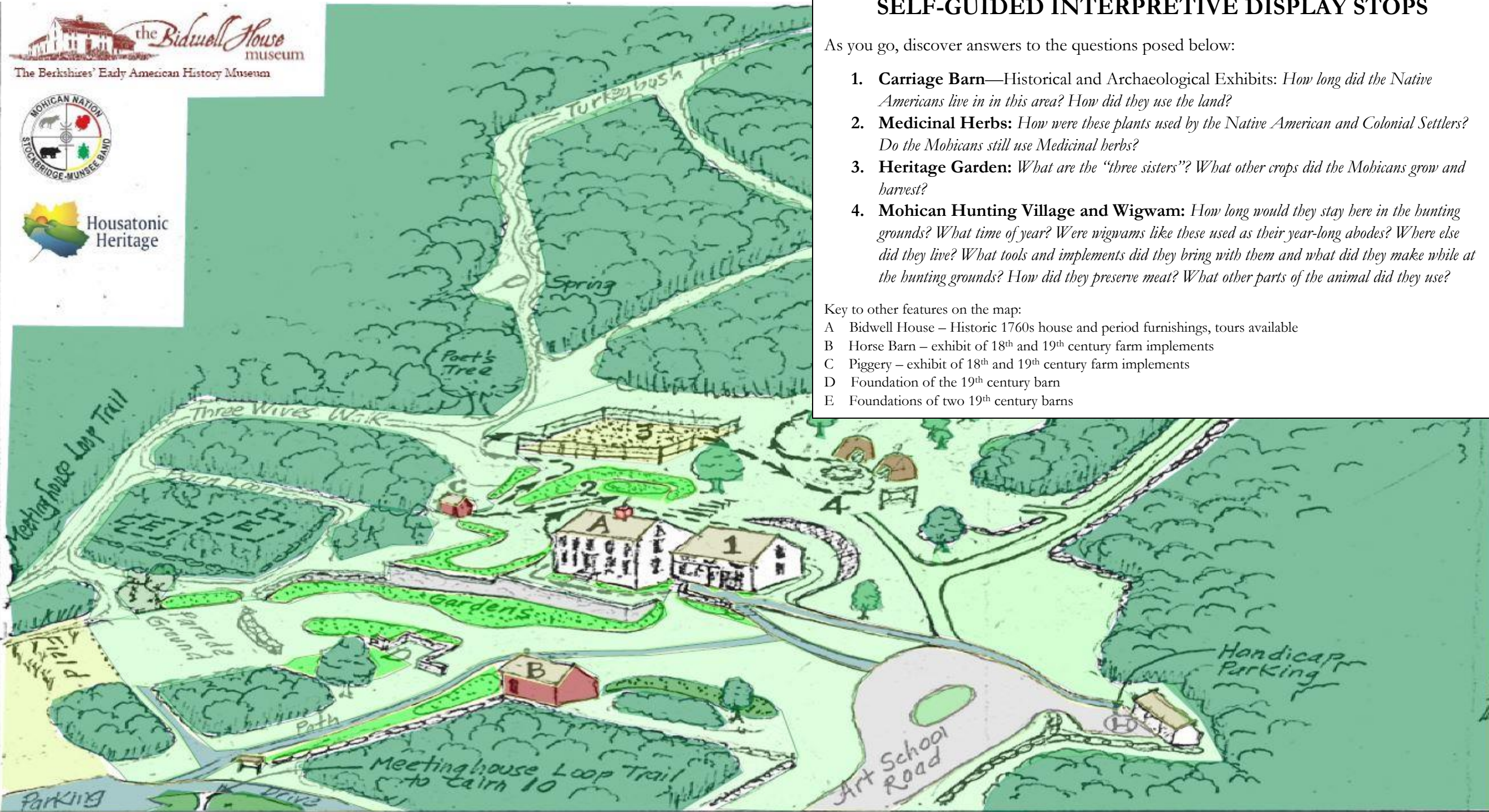


The drawing on the cover is of a Stockbridge Indian who fought in the Colonial Militia during the Revolutionary War, and is from the 1784 journal of Johann von Ewald.

NATIVE AMERICAN INTERPRETIVE TRAIL WOODLANDS AND HUNTING GROUNDS



NATIVE AMERICAN INTERPRETIVE TRAIL WOODLANDS AND HUNTING GROUNDS



SELF-GUIDED INTERPRETIVE DISPLAY STOPS

As you go, discover answers to the questions posed below:

- 1. Carriage Barn**—Historical and Archaeological Exhibits: *How long did the Native Americans live in in this area? How did they use the land?*
- 2. Medicinal Herbs:** *How were these plants used by the Native American and Colonial Settlers? Do the Mobicans still use Medicinal herbs?*
- 3. Heritage Garden:** *What are the "three sisters"? What other crops did the Mobicans grow and harvest?*
- 4. Mohican Hunting Village and Wigwam:** *How long would they stay here in the hunting grounds? What time of year? Were wigwams like these used as their year-long abodes? Where else did they live? What tools and implements did they bring with them and what did they make while at the hunting grounds? How did they preserve meat? What other parts of the animal did they use?*

Key to other features on the map:

- A Bidwell House – Historic 1760s house and period furnishings, tours available
- B Horse Barn – exhibit of 18th and 19th century farm implements
- C Piggery – exhibit of 18th and 19th century farm implements
- D Foundation of the 19th century barn
- E Foundations of two 19th century barns